

LWG-TPA series

Blickle WAVE synthetic castors, with stem, colour silver grey, wheel with thermoplastic rubber tread



100–110 kg

-20 °C to +60 °C

Bracket: LWG series

- high-quality nylon 6, impact resistant
- encapsulated, double-sealed, grooved ball bearing in the swivel head
- zinc-plated, blue-passivated steel plug-in stem (Cr6-free), bolted and secured
- colour silver grey RAL 7001
- modern, appealing design

Wheel: TPA series

- tread: high-quality thermoplastic rubber-elastomer (TPE), hardness 85 Shore A, colour grey, non-marking, oil containing
- wheel centre: high-quality polypropylene, impact resistant, colour silver grey RAL 7001

Other features:

- the load capacity reduces at ambient temperatures above +30 °C

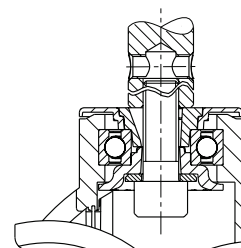
Additional details:

- bracket series: page 88
- brakes: page 112–113
- wheel series: page 60
- bearing types: page 84–85



BLICKLE DESIGN LINE

2



Swivel castors	Swivel castors with "stop-fix" brake	Wheel Ø [mm]	Wheel width [mm]	Load capacity [kg]	Bearing type	Total height [mm]	Stem Ø (D) [mm]	Stem length [mm]	Ø cross hole [mm]	Position cross hole (H) [mm]	Offset swivel castor [mm]
LWG-TPA 101G-ZA51	LWG-TPA 101G-FI-ZA51	100	32	100	plain bore	135	18	62	M6	30	38
LWG-TPA 101G-ZA55	LWG-TPA 101G-FI-ZA55	100	32	100	plain bore	135	22	45	M8	20	38
LWG-TPA 101KF-ZA51	LWG-TPA 101KF-FI-ZA51	100	32	100	ball bearing (C)	135	18	62	M6	30	38
LWG-TPA 101KF-ZA55	LWG-TPA 101KF-FI-ZA55	100	32	100	ball bearing (C)	135	22	45	M8	20	38
LWG-TPA 126G-ZA51	LWG-TPA 126G-FI-ZA51	125	32	110	plain bore	160	18	62	M6	30	40
LWG-TPA 126G-ZA55	LWG-TPA 126G-FI-ZA55	125	32	110	plain bore	160	22	45	M8	20	40
LWG-TPA 126KF-ZA51	LWG-TPA 126KF-FI-ZA51	125	32	110	ball bearing (C)	160	18	62	M6	30	40
LWG-TPA 126KF-ZA55	LWG-TPA 126KF-FI-ZA55	125	32	110	ball bearing (C)	160	22	45	M8	20	40

For corrosion-resistant versions of synthetic castors, see page 167
Additional stem fitting dimensions available upon request

Versions / options



	plain bore version	electrically conductive version, non-marking, grey	in special colour
Technical description page		50	
Product code suffix		LWGE-...-ELS	
Available for		all ball bearing versions*	upon request

* Load capacity of electrically conductive version reduced by 35%